

In today's bandwidth hungry climate with rapidly-emerging technology trends, never before has the need for a high speed networking solutions been more critical. Designed to support 10 Gigabit Ethernet (10GBase-T), Category 6A is an optimum speed structured cabling solution offering superior performance where speed, reliability, future proofing or long term tenancy is required, and as such, is now becoming the system of choice for Data Centres, financial institutions and enterprises requiring the maximum performance level for their business operations.

Traditionally unshielded cabling solutions have been the system of choice in many markets. However, due to the 10-fold increase in data transmission requirements to support 10GBase-T applications, the implementation of a Category 6A cabling system is significantly more complex than its predecessors and brings with it a number of issues relating to cabling layout and design, containment and alien crosstalk. The only effective way to counter these issues whilst still maintaining high-speed data transfer is via a shielded Category 6A solution.

Molex's PowerCat™ 6A solution has been developed with the highest performing capabilities in mind. With improved data transmission over higher frequencies and enhanced noise suppression - why compromise? Our solution has been meticulously designed to provide the most advanced alien crosstalk mitigation and an insertion loss that surpasses all unshielded systems.

The Technology

By adopting a Category 6A shielded solution, the traditional implementation challenges faced when using unshielded are significantly reduced - alien crosstalk, cost of pathways and spaces, and the building infrastructure design. Shielded solutions bring about exceptional reliability at extreme speeds with greater bandwidth and headroom. Termination time of shielded products, once considered cumbersome, is now dramatically reduced mainly due to smaller cable diameter, improved cable management, tooling and connector technology.



PowerCat™ >
6A Solution

What we do

For over 30 years Molex has manufactured innovative data transport and advanced management solutions.

Bringing Advanced Physical Layer Lifecycle Management to Enterprises Worldwide

Peace of mind

The PowerCat 6A system is covered by a Global 25 Year Product, System Performance and Application Assurance Warranty

Standards Compliance

TIA/EIA -568-C.2 Cat 6A Channel and PL ISO/IEC 11801 AMD 1 Class EA

Molex's Category 6A Solution

To provide a superior performing network solution, we have developed our shielded product range. The Molex Category 6A shielded solution is designed specifically for high speed data transmissions demanding little room for error, whilst offering exceptional alien crosstalk suppression, excellent insertion loss and protection against Electromagnetic Interference (EMI).

DataGate™ Connector

The PowerCat 6A Shielded RJ45 connector is the cornerstone of the PowerCat 6A System offering superior alien crosstalk mitigation and insertion loss. The spring-loaded shutter means that it not only protects from dust and contaminants, but also ejects improperly seated or damaged patch cords. The connector is available in either traditional rear or side entry variations.

Patch Panels

Robust 24 and 48 port panels supplied with equally robust cable management trays for cable strain relief and uniform cable dressing. The angled panel design provides enhanced port access and minimizes patch cord bend radius whilst eliminating the need for horizontal rack managers, thus allowing higher port density in racks - ideal for Data Centre applications.

U/FTP Cable

Specifically designed to support 10 Gigabit Ethernet (10GBase-T), this high performance cable minimizes alien crosstalk and provides excellent signal isolation whilst eliminating the effects of EMI.

Patch Cords

Made from high quality shielded four pair 26AWG stranded wire and available in a range of colors and lengths, the PowerCat 6A shielded patch cords are pre-terminated with RJ45 shielded plugs and feature over-moulded anti-sag strain relief boots.

Highlights of the Molex PowerCat™ 6A Solution

- 360° shielded connection with the shielded DataGate connector available in both traditional rear or side entry variations.
- Protection - the unique spring loaded DataGate connector shutter not only protects against dust, contaminants and unwanted ingress, but also ejects improperly seated or damaged patch cords
- Traditional or side entry modules available - enabling easy fit in limited backbox space
- Reliability - cable management features help reduce stress on cables and maintain consistent performance
- Excellent performance - end-to-end shielded solution for the support of 10Gb Ethernet (10GBASE-T) application



Ordering Information

Cable

Order No.	SAP No.	Description
CAA-0320P-08	183020003	PowerCat 6A F/UTP CMP Cable - Gray
CAA-0320P-BL	183020004	PowerCat 6A F/UTP CMP Cable - Blue
CAA-0320P-02	183020005	PowerCat 6A F/UTP CMP Cable - White
CAA-0320R-08	183020006	PowerCat 6A F/UTP CMR Cable - Gray
CAA-0320R-BL	183020007	PowerCat 6A F/UTP CMR Cable - Blue
CAA-0320R-02	183020008	PowerCat 6A F/UTP CMR Cable - White

Patch Panels

Order No.	SAP No.	Description
PID-00217	182960000	PowerCat 6A Shielded 1U 24P Patch Panel
PID-00218	182960001	PowerCat 6A Shielded 1U 24P Angled Patch Panel
PID-00219	182960002	PowerCat 6A Shielded 2U 48P Patch Panel
PID-00220	182960003	PowerCat 6A Shielded 2U 48P Angled Patch Panel

Patch Cords

Order No.	SAP No.	Description
PCD-07020-**	Consult Molex	PowerCat 6A Shielded Patch Cord 1MΔ
PCD-07021-**	Consult Molex	PowerCat 6A Shielded Patch Cord 2M
PCD-07022-**	Consult Molex	PowerCat 6A Shielded Patch Cord 3M
PCD-07023-**	Consult Molex	PowerCat 6A Shielded Patch Cord 5M
PCD-07024-**	Consult Molex	PowerCat 6A Shielded Patch Cord 7M
PCD-07025-**	Consult Molex	PowerCat 6A Shielded Patch Cord 10M

Note: Insert color code instead of ** in part number when ordering patch cords:

OC=Red, 0E=Grey, 0H=Blue, 0J=Green, 0K=Yellow, 0W=White, 0P=Purple, 0N=Orange, BK=Black
Δ Important - please contact internal sales for information on 1m patch cords

Work Area Modules

Order No.	SAP No.	Description
KSJ-00062-04	183010002	PowerCat 6A Shielded Jack 8W 568 A/B Black
KSJ-00062-02	183010003	PowerCat 6A Shielded Jack 8W 568 A/B White
KSJ-00073-02	Consult Molex	PowerCat 6A Shielded Side Entry Jack - Black shutter
KSJ-00073-04	Consult Molex	PowerCat 6A Shielded Side Entry Jack - White shutter

Wallplates

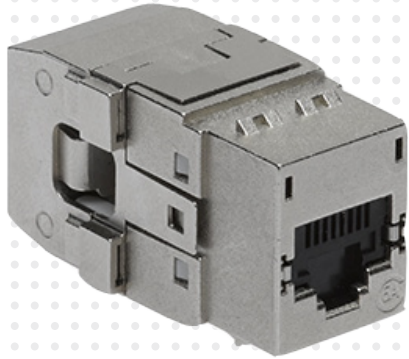
Order No.	SAP No.	Description
WSY-00018-01	181770067	2 Port Synergy wallplate - Almond
WSY-00018-02	181770068	2 Port Synergy wallplate - White
WSY-00018-05	181770069	2 Port Synergy wallplate - Ivory
WSY-00002-01	181770004	4 Port Synergy wallplate - Almond
WSY-00002-02	182080075	4 Port Synergy wallplate - White
WSY-00002-05	181770037	4 Port Synergy wallplate - Ivory
WSY-00006-01	181770009	2 Port Angled Synergy wallplate - Almond
WSY-00006-02	181770010	2 Port Angled Synergy wallplate - White
WSY-00006-05	181770042	2 Port Angled Synergy wallplate - Ivory
WSY-00005-01	181770007	4 Port Angled Synergy wallplate - Almond
WSY-00005-02	181770008	4 Port Angled Synergy wallplate - White
WSY-00005-05	181770041	4 Port Angled Synergy wallplate - Ivory

Accessories

CSP-00025-**	Consult Molex	Snapz Telcom icon tree (bag of 10)
CSP-00026-**	Consult Molex	Snapz Alpha icon tree (bag of 10)
CSP-00013	Consult Molex	Clear label holder (Bag of 100)

Insert color code in place of **

01- Almond, 02-White, 04-Black, 05-Ivory, 08-Gray



Americas

Corporate Headquarters
+1 630 969 4550

Asia Pacific

Australia
+61 3 9971 7111
China
+86 21 5048 0889
India
+91 80 4129 3500

EMEA

United Kingdom
+44 (0)2392 205 800
Czech Republic
+420 222 191 418
Poland
+48 22 333 81 50
Russia
+7 495 642 64 55
Ukraine
+38 (044) 494 2642
Middle East
+971 4 299 0430
South Africa
+27 11 513 4223

