



## PowerCat™ > 6 UTP Solution

### What we do

For over 30 years Molex has manufactured innovative data transport and advanced management solutions.

Bringing Advanced Physical Layer Lifecycle Management to Enterprises Worldwide

### Standards Compliance

ANSI/TIA-568-C.2 Category 6  
ANSI/EIA-1069-A  
ISO 11801 Class E  
IEC 60603-7-4



## PowerCat™ 6 - UTP Solutions

The PowerCat™ 6 range of Category 6 compliant products provide a high performance end-to-end UTP copper solution, designed to meet and exceed all relevant international performance standards, including TIA/EIA-568-C and ISO/IEC 11801.

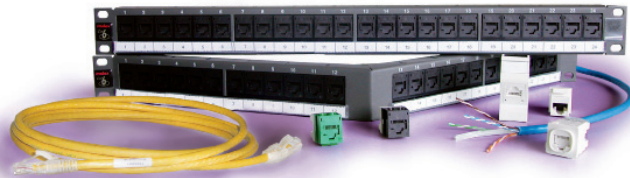
Consisting of cable, patch panels, patch cords and work area modules, the PowerCat 6 - Category 6 solution provides a significant leap in performance and data transmission capability when compared to Category 5e.

### Highlights of the PowerCat 6 solution

- Total end-to-end horizontal cabling solution
- Compliant to TIA/EIA-568-C and ISO/IEC 11801
- Superior headroom to that of Category 5e performance
- Backwards compatible with Molex Category 5e systems – ensuring support for legacy applications
- Independently tested and verified

### Why choose Molex Category 6?

For over 30 years Molex Premise Networks, a subsidiary of Molex, has manufactured comprehensive UTP, FTP and Optical Fiber cabling products suitable for the transmission of voice, data and video imaging signals. Our cabling solutions have been installed in a wide range of organizations world wide and are supported by a global 25-year Product, System Performance and Application Assurance Warranty. With more than one million connectors installed by a global network of certified cabling experts, all fully supported by our Technical and Services teams, you can be sure that a Molex PowerCat 5e installation won't let you down.



### Superior product performance

The PowerCat 6 solution utilizes our RJ-45 DataGate™ connector technology. The DataGate connector features a patented 'spring-loaded shutter' providing protection from dust and contaminants, and the patented V-shaped IDC contacts improve installation speed and enhance cable retention.

Designed to support high speed networks, cable is available in both CMR or CMP sheaths, with PVC CM rated patch cords. An angled patching solution is also available to support high density installations where communications room space is limited.

### Independently tested

To ensure that our product consistently performs to the optimum performance we are partnered with Intertek ETL - the world's largest product and commodities testing organization - to objectively test and verify the Channel and Link performance of the PowerCat 6 solution.

ETL randomly purchase Molex Category 6 products off the open market and tests them to verify performance specified by the ANSI/TIA/EIA-568-C.2 and ISO/IEC 11801 Ed. 2.2 industry standards. This testing is completed independently of Molex and in the event that any products fail, ETL verification status is removed. Our continuous affiliation to this program provides a further safety net to our customers, ensuring they always receive the best quality product.

### BAA/TAA Compliance

The Molex PowerCat 6 solution product range fully complies with the BAA (Buy America Act) or (Trade Agreement Act) requirements and maybe used for the United States Government projects. These products are also compliant with GSA (General Services Administration) schedules.



**Americas**

Corporate Headquarters  
+1 630 969 4550

**Asia Pacific**

Australia  
+61 3 9971 7111  
China  
+86 21 5048 0889  
India  
+91 80 4129 3500

**EMEA**

United Kingdom  
+44 (0)2392 205 800  
Czech Republic  
+420 222 191 418  
Poland  
+48 22 333 81 50  
Russia  
+7 495 642 64 55  
Ukraine  
+38 (044) 494 2642  
Middle East  
+971 4 299 0430  
South Africa  
+27 11 513 4223



**Ordering Information**

**Cat 6 UTP Cable**

Order No.	SAP No.	Description
CAA-0195P-02	181740024	PowerCat 6 4 Pair Cable, Plenum, White
CAA-0195P-08	181740025	PowerCat 6 4 Pair Cable, Plenum, Light Gray
CAA-0195P-BL	181740023	PowerCat 6 4 Pair Cable, Plenum, Blue
CAA-0195R-02	181740027	PowerCat 6 4 Pair Cable, Riser, White
CAA-0195R-08	181740028	PowerCat 6 4 Pair Cable, Riser, Light Gray
CAA-0195R-BL	181740026	PowerCat 6 4 Pair Cable, Riser, Blue

**Cat 6e UTP Cable**

Order No.	SAP No.	Description
CAA-0181P-02	181700030	PowerCat 6 4 Pair Cable, Plenum, White
CAA-0181P-08	181700028	PowerCat 6 4 Pair Cable, Plenum, Light Gray
CAA-0181P-BL	181700031	PowerCat 6 4 Pair Cable, Plenum, Blue
CAA-0181R-02	181700025	PowerCat 6 4 Pair Cable, Riser, White
CAA-0181R-08	181700023	PowerCat 6 4 Pair Cable, Riser, Light Gray
CAA-0181P-BL	181700024	PowerCat 6 4 Pair Cable, Riser, Blue

**Patch Panels**

Order No.	SAP No.	Description
PID-00146	182080291	24 Port PowerCat 6 Patch Panel, 568A/B, 1U
PID-00147	182080292	48 Port PowerCat 6 Patch Panel, 568A/B, 2U
PID-00156G	182080297	24 Port Angled PowerCat 6 Patch Panel, 568A/B, 1U - Graphite
PID-00156B	182080298	24 Port Angled PowerCat 6 Patch Panel, 568A/B, 1U - Black
PID-00157	182080299	48 Port Angled PowerCat 6 Patch Panel, 568A/B, 2U - Graphite
PID-00157B	182080300	48 Port Angled PowerCat 6 Patch Panel, 568A/B, 2U - Black

**Patch Cords**

Order No.	SAP No.	Description
PCD-02040-**-**	Consult Molex	PowerCat 6 UTP Patch Cord PVC 0.5m
PCD-02041-**-**	Consult Molex	PowerCat 6 UTP Patch Cord PVC 1m
PCD-02047-**-**	Consult Molex	PowerCat 6 UTP Patch Cord PVC 1.5m
PCD-02042-**-**	Consult Molex	PowerCat 6 UTP Patch Cord PVC 2m
PCD-02043-**-**	Consult Molex	PowerCat 6 UTP Patch Cord PVC 3m
PCD-02044-**-**	Consult Molex	PowerCat 6 UTP Patch Cord PVC 5m
PCD-02045-**-**	Consult Molex	PowerCat 6 UTP Patch Cord PVC 7m
PCD-02046-**-**	Consult Molex	PowerCat 6 UTP Patch Cord PVC 10m

Note: Insert color code in place of \*\* in part number when ordering Patch Cords: OC=Red, OE=Grey, OH=Blue, OJ=Green, OK=Yellow, OW=White, OP=Purple, ON=Orange, BK=Black  
Insert "TA" for TAA compliant patch cords, in place of second\*\*

**Work Area Jacks**

Order No.	SAP No.	Description
KSJ-00018-**-**	Consult Molex	PowerCat 6 DataGate Jack, 568A/B
KSJ-00033-**-**	Consult Molex	PowerCat 6 Keystone Jack, 8W, 568A/B

Note: Jack colors - 01=Almond, 02=White, 04=Black, 05=Ivory, 08=Light Grey, RD=Red, BL=Blue, GR=Green, YL=Yellow, RG=Orange, PP=Purple  
Insert "TA" for TAA compliant jacks, in place of second\*\*

**Wallplates**

Order No.	SAP No.	Description
WSY-00001-02	181770031	6 Port Synergy Wallplate - Unloaded - White
WSY-00002-02	182080075	4 Port Synergy Wallplate - Unloaded - White
WSY-00003-02	181770080	3 Port Synergy Wallplate - Unloaded - White
WSY-00004-02	181770040	4 Port 1U Synergy Wallplate-Unloaded - White
WSY-00005-02	181770008	4 Port Angled Synergy Wallplate - Unloaded - White
WSY-00006-02	181770010	2 Port Angled Synergy Wallplate - Unloaded - White
WSY-00018-02	181770068	2 Port Synergy Wallplate - Unloaded - White
WPJ-00007-02	184000536	1 Port Streamline Plastic Wallplate - Unloaded - White
WPJ-00008-02	184000539	2 Port Streamline Plastic Wallplate - Unloaded - White
WPJ-00009-02	184000542	3 Port Streamline Plastic Wallplate - Unloaded - White
WPJ-00010-02	184000545	4 Port Streamline Plastic Wallplate - Unloaded - White
WSS-00001	184000551	1 Port Stainless Steel Streamline Wallplate - Unloaded
WSS-00002	184000316	2 Port Stainless Steel Streamline Wallplate - Unloaded
WSS-00003	184000552	3 Port Stainless Steel Streamline Wallplate - Unloaded
WSS-00004	184000553	4 Port Stainless Steel Streamline Wallplate - Unloaded
WSS-00006	184000554	6 Port Stainless Steel Streamline Wallplate - Unloaded

Note: Work Area Jacks and Wallplates are available in various colors to suit all environments and decor. Please refer to our website for more information.