



PowerCat™ > 6 UTP Solution

What we do

For over 30 years Molex has manufactured innovative data transport and advanced management solutions.

Bringing Advanced Physical Layer Lifecycle Management to Enterprises Worldwide

Standards Compliance

ANSI/TIA-568-C.2 Category 6
ANSI/EIA-1069-A
ISO 11801 Class E
IEC 60603-7-4

The PowerCat™ 6 range of Category 6 compliant products provide a high performance end-to-end UTP copper solution, designed to meet and exceed all relevant international performance standards, including TIA/EIA-568-C and ISO/IEC 11801.

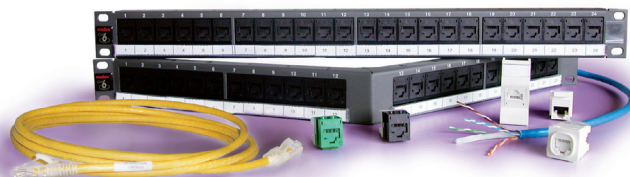
Consisting of cable, patch panels, patch cords and work area modules, the PowerCat 6 - Category 6 solution provides a significant leap in performance and data transmission capability when compared to Category 5e.

Highlights of the PowerCat 6 solution

- Total end-to-end horizontal cabling solution
- Compliant to TIA/EIA-568-C and ISO/IEC 11801
- Superior headroom to that of Category 5e performance
- Backwards compatible with Molex Category 5e systems – ensuring support for legacy applications
- Independently tested and verified

What is the Advantage of Category 6 over Category 5e?

Put simply, a Category 6 solution provides positive PowerSum ACR beyond 200Mhz. This means that a Category 6 compliant network infrastructure can provide twice the normal bandwidth of existing Category 5e cabling systems. Other benefits, such as enhanced Return Loss performance also ensure support for high-speed, bidirectional applications like Gigabit Ethernet.



Superior product performance

The PowerCat 6 solution utilises our RJ-45 DataGate™ connector technology. The DataGate connector features a patented 'spring-loaded shutter' providing protection from dust and contaminants, and the patented V-shaped IDC contacts improve installation speed and enhance cable retention.

Designed to support high speed networks, cable is available in both PVC or LS0H sheaths, with patch cords available in LS0H sheaths. An angled patching solution is also available to support high density installations where communications room space is limited.

Independently tested

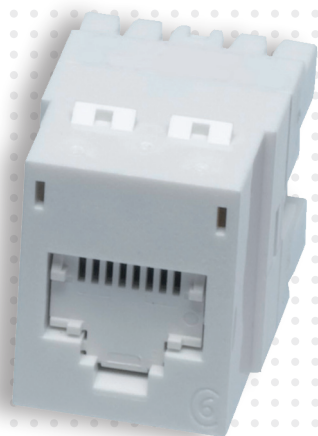
To ensure that our product consistently performs to the optimum performance we are partnered with Intertek ETL SEMKO - the world's largest product and commodities testing organisation - to objectively test and verify the Channel and Link performance of the PowerCat 6 solution.

ETL randomly purchase Molex Category 6 products off the open market and tests them to verify performance specified by the ANSI/TIA/EIA-568-C.2 and ISO/IEC 11801 Ed. 2.2 industry standards. This testing is completed independently of Molex and in the event that any products fail, ETL verification status is removed. Our continuous affiliation to this programme provides a further safety net to our customers, ensuring they always receive the best quality product.



PowerCat™ 6 - UTP Solutions

molex[®]
one company > a world of innovation



Ordering Information

Cable

Order No.	Description
CAA-00326	PowerCat 6 4 Pair Cable PVC U/UTP - 500m Reel
CAA-00325	PowerCat 6 4 Pair Cable LS0H IEC 332.1 U/UTP - 500m Reel
CAA-00305	PowerCat 6 U/UTP 4 Pair Cable LS0H IEC 332.1 U/UTP, 305m Reel in a Box - Violet

Patch Panels

Order No.	Description
PID-00141	24 Port PowerCat 6 Patch Panel, 568A/B, 1U
PID-00142	48 Port PowerCat 6 Patch Panel, 568A/B, 2U
PID-00156	24 Port Angled PowerCat 6 Patch Panel, 568A/B, 1U
PID-00157	48 Port Angled PowerCat 6 Patch Panel, 568A/B, 2U
PID-00258	PowerCat 24 Port DataGate Patch Panel, Unloaded UTP or Shielded - 1U
PID-00259	PowerCat 24 Port DataGate Angled Patch Panel, Unloaded UTP or Shielded - 1U
PID-00260	PowerCat 48 Port DataGate Patch Panel, Unloaded UTP or Shielded - 2U
PID-00261	PowerCat 48 Port DataGate Angled Patch Panel, Unloaded UTP or Shielded - 2U
PID-00210	24 Port Keystone Patch Panel, Unloaded - 1U
KSJ-00064-**	Keystone Blank

Note: Patch Panel accessories are available. Please refer to our Product & Solutions Guide for more information.

Patch Cords and Solid Cable Assemblies

Order No.	Description
PCD-02000-**	PowerCat 6 U/UTP LS0H Patch Cord 0.5m
PCD-02001-**	PowerCat 6 U/UTP LS0H Patch Cord 1m
PCD-02002-**	PowerCat 6 U/UTP LS0H Patch Cord 1.5m
PCD-02003-**	PowerCat 6 U/UTP LS0H Patch Cord 2m
PCD-02005-**	PowerCat 6 U/UTP LS0H Patch Cord 3m
PCD-02009-**	PowerCat 6 U/UTP LS0H Patch Cord 5m
PCD-02013-**	PowerCat 6 U/UTP LS0H Patch Cord 7m
PCD-02019-**	PowerCat 6 U/UTP LS0H Patch Cord 10m
PCD-00464-0P	PowerCat 6 U/UTP Solid Cable Patch Cord Assembly LS0H Violet - 4m
PCD-00465-0P	PowerCat 6 U/UTP Solid Cable Patch Cord Assembly LS0H Violet - 6m
PCD-00466-0P	PowerCat 6 U/UTP Solid Cable Patch Cord Assembly LS0H Violet - 8m
PCD-00467-0P	PowerCat 6 U/UTP Solid Cable Patch Cord Assembly LS0H Violet - 10m
PCD-00468-0P	PowerCat 6 U/UTP Solid Cable Patch Cord Assembly LS0H Violet - 20m
PCD-00469-0P	PowerCat 6 U/UTP Solid Cable Patch Cord Assembly LS0H Violet - 30m
PCD-00470-0P	PowerCat 6 U/UTP Solid Cable Patch Cord Assembly LS0H Violet - 40m

Note: Insert colour code instead of ** in part number when ordering patch cords:
0C= Red, 0E=Grey, 0H=Blue, 0J=Green, 0K=Yellow

Jacks and Work Area Modules

Order No.	Description
KSJ-00018-**	PowerCat 6 DataGate Jack 8W 568A/B
KSJ-00033-**	Keystone Jack, Category 6, 8W, 568A/B
MMC-00010-**	PowerCat 6 MOD-Clip DataGate Jack 568 A/B
MMS-00013-02	PowerCat 6 Angled MOD-SNAP III Module, RJ45 568A/B UTP - White
MGB-00001-02	PowerCat 6 Angled Contura Module, RJ45 568A/B UTP - White
MEU-00056-02	PowerCat 6 Euromod II Module, RJ45 568A/B UTP - White
MLG-00021-02	PowerCat 6 22.5 x 45mm Legrand Compatible Module, RJ45 568A/B UTP - White
MLG-00024-02	PowerCat 6 45 x 45mm Legrand Compatible Module, RJ45 568A/B UTP - White
MIT-00012-0E	PowerCat 6 Vimar Compatible Module, RJ45 568A/B UTP - Black
MIT-00011-0E	PowerCat 6 BTicino Compatible Module, RJ45 568A/B UTP - Black
WNC-00030-02	PowerCat 6 1 Port DIN Module, RJ45 568A/B UTP - White
WNC-00031-02	PowerCat 6 2 Port DIN Module, RJ45 568A/B UTP - White

Note: Insert colour code instead of ** in part number when ordering
DataGate Jack - 02 = White, 04 = Black.
MOD-Clip Jack - 02 = White, 04 = Black, 08 = Light Grey, RD = Red, BL = Blue, GR = Green, YL = Yellow
Keystone Jack - 01 = Almond, 02 = White, 04 = Black

Consolidation Points

Order No.	Description
CPT-00032	PowerCat 6 6 Port Consolidation Point Enclosure, UTP, 568A/B
CPT-00033	PowerCat 6 8 Port Consolidation Point Enclosure, UTP, 568A/B
SBX-00005-02	PowerCat 6 1 Port Synergy Surface Box RJ45 568A/B UTP - White
SSY-00007-02	PowerCat 6 2 Port Synergy Surface Box RJ45 568A/B UTP - White
SSY-00008-02	PowerCat 6 4 Port Synergy Surface Box RJ45 568A/B UTP - White
SSY-00009-02	PowerCat 6 6 Port Synergy Surface Box RJ45 568A/B UTP - White

Americas

Corporate Headquarters
+1 630 969 4550

Asia Pacific

Australia
+61 3 9971 7111
China
+86 21 5048 0889
India
+91 80 4129 3500

EMEA

United Kingdom
+44 (0)2392 205 800
Czech Republic
+420 222 191 418
Poland
+48 22 333 81 50
Russia
+7 495 642 64 55
Ukraine
+38 (044) 494 2642
Middle East
+971 4 299 0430
South Africa
+27 11 513 4223

